



**Noise Monitoring Result**

**Day Time (0700 - 1900hrs on normal weekdays)**

Location: M1a - Harbour Road Sports Centre

Date	Time	Weather	Measurement Noise Level			Baseline Level	Construction Noise Level	Limit Level
			Leq	L10	L90	Leq	Leq	Leq
Unit: dB(A), (30-min)								
30/8/2016	10:13	Fine	76.5	77.5	74.5	72	74	75
6/9/2016	10:35	Fine	76.8	79.0	74.0	72	75	75
12/9/2016	13:49	Fine	75.5	78.0	72.0	72	73	75
20/9/2016	14:00	Fine	74.7	76.0	72.5	72	71	75

Location: M2b - Noon-day gun area

Date	Time	Weather	Measurement Noise Level			Baseline Level	Construction Noise Level	Limit Level
			Leq	L10	L90	Leq	Leq	Leq
Unit: dB(A), (30-min)								
30/8/2016	10:56	Fine	66.4	68.0	64.5	68	66	75
6/9/2016	11:18	Fine	67.4	68.5	65.5	68	67	75
12/9/2016	14:25	Fine	67.0	68.0	65.0	68	67	75
19/9/2016	09:53	Fine	67.2	68.5	65.0	68	67	75

Location: M3a - Tung Lo Wan Fire Station

Date	Time	Weather	Measurement Noise Level			Baseline Level	Construction Noise Level	Limit Level
			Leq	L10	L90	Leq	Leq	Leq
Unit: dB(A), (30-min)								
30/8/2016	11:30	Fine	65.3	66.5	63.0	69	65	75
6/9/2016	13:00	Fine	66.0	67.0	64.5	69	66	75
13/9/2016	13:00	Fine	65.5	66.0	63.0	69	66	75
21/9/2016	10:25	Fine	66.0	67.5	63.0	69	66	75

Location: M4b - Victoria Centre

Date	Time	Weather	Measurement Noise Level			Baseline Noise Level	Construction Noise Level	Limit Level
			Leq	L10	L90	Leq	Leq	Leq
Unit: dB(A), (30min)								
30/8/2016	13:05	Fine	65.5	66.5	63.5	67	66	75
6/9/2016	13:40	Fine	65.4	67.0	63.5	67	65	75
13/9/2016	13:35	Fine	64.1	65.5	63.0	67	64	75
21/9/2016	11:30	Fine	64.4	65.5	62.0	67	64	75

Location: M5b - City Garden

Date	Time	Weather	Measurement Noise Level			Baseline Level	Construction Noise Level	Limit Level
			Leq	L10	L90	Leq	Leq	Leq
Unit: dB(A), (30min)								
30/8/2016	13:50	Fine	69.4	69.5	68.5	68	64	75
6/9/2016	14:20	Fine	72.1	76.0	67.0	68	70	75
13/9/2016	14:15	Fine	70.1	71.0	68.5	68	66	75
20/9/2016	14:49	Fine	70.1	71.0	69.0	68	66	75

Location: M6 - HK Baptist Church Henrietta Secondary School

Date	Time	Weather	Measurement Noise Level			Baseline Level	Construction Noise Level	Limit Level
			Leq	L10	L90	Leq	Leq	Leq
Unit: dB(A), (30-min)								
30/8/2016	14:26	Fine	71.5	72.0	70.0	71	64	70
6/9/2016	14:57	Fine	68.1	69.0	66.5	71	68	70
13/9/2016	14:55	Fine	71.7	72.5	69.0	71	65	70
20/9/2016	15:29	Fine	71.1	72.0	69.5	71	61	70



### Noise Monitoring Result

#### Day Time (0700 - 1900hrs on normal weekdays)

Location: M7e - International Finance Centre (Eastern End of Podium) (Reference Station)

Date	Time	Weather	Measurement Noise Level			Baseline Level	Construction Noise Level	Limit Level
			Leq	L10	L90	Leq	Leq	Leq
Unit: dB(A), (30-min)								
30/8/2016	08:35	Fine	66.2	67.0	64.5	67	66	N/A
6/9/2016	09:00	Fine	66.0	67.5	64.5	67	66	N/A
13/9/2016	10:15	Fine	67.6	69.0	65.0	67	60	N/A
20/9/2016	10:00	Cloudy	66.0	67.0	64.5	67	66	N/A

Location: M7w - International Finance Centre (Western End of Podium)

Date	Time	Weather	Measurement Noise Level			Baseline Level	Construction Noise Level	Limit Level
			Leq	L10	L90	Leq	Leq	Leq
Unit: dB(A), (30-min)								
30/8/2016	08:00	Fine	66.1	67.5	64.5	69	66	75
6/9/2016	08:25	Fine	66.5	67.0	64.0	69	67	75
13/9/2016	10:52	Fine	65.3	67.0	62.5	69	65	75
20/9/2016	10:35	Cloudy	63.0	64.5	62.0	69	63	75

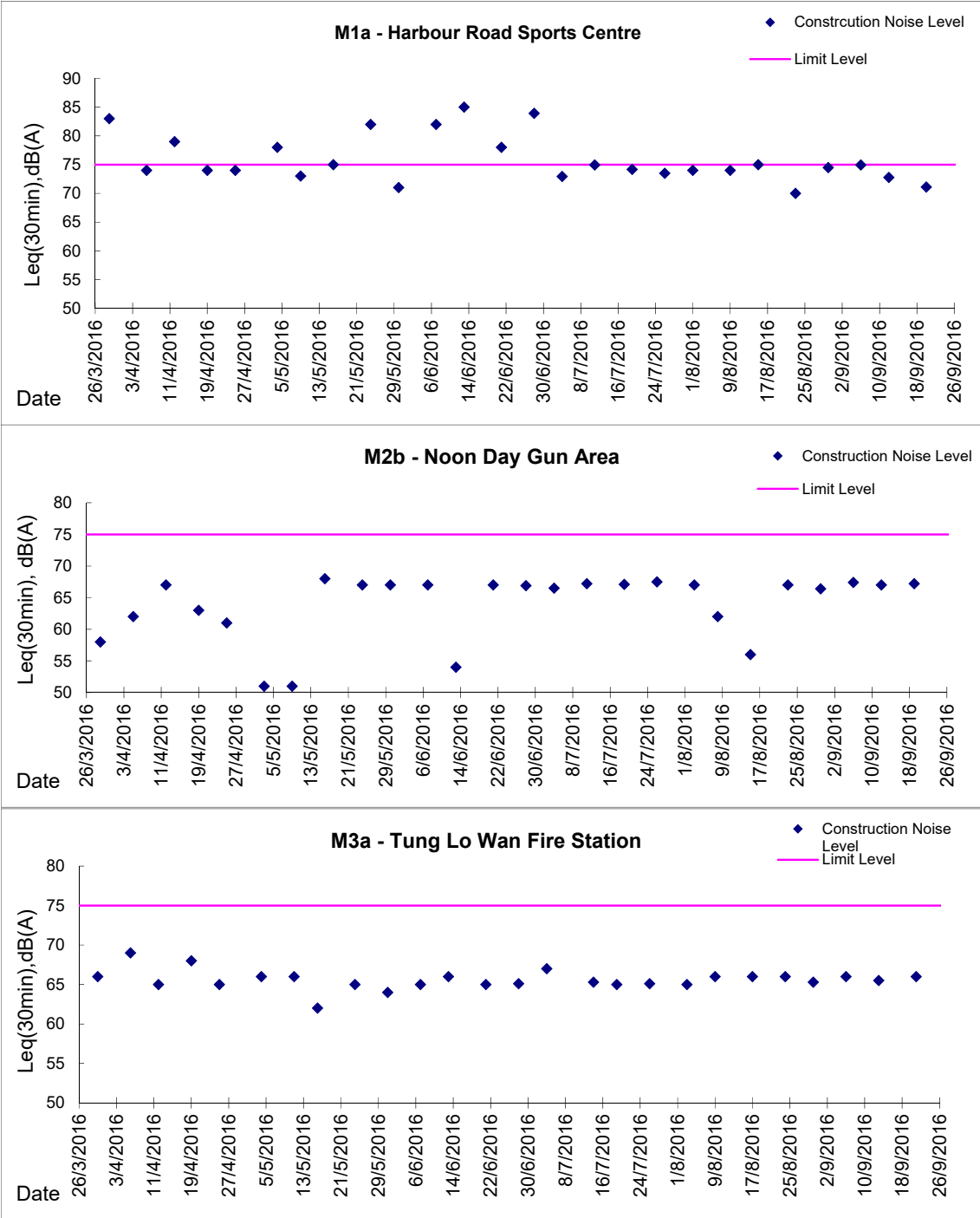
Location: M8 - City Hall

Date	Time	Weather	Measurement Noise Level			Baseline Level	Construction Noise Level	Limit Level
			Leq	L10	L90	Leq	Leq	Leq
Unit: dB(A), (30-min)								
30/8/2016	09:15	Fine	60.2	63.0	56.0	64	60	70
6/9/2016	09:45	Fine	60.9	63.0	57.5	64	61	70
12/9/2016	17:18	Fine	60.8	63.0	57.0	64	61	70
20/9/2016	11:30	Cloudy	62.0	63.5	60.0	64	62	70



Graphic Presentation of Noise Monitoring Result

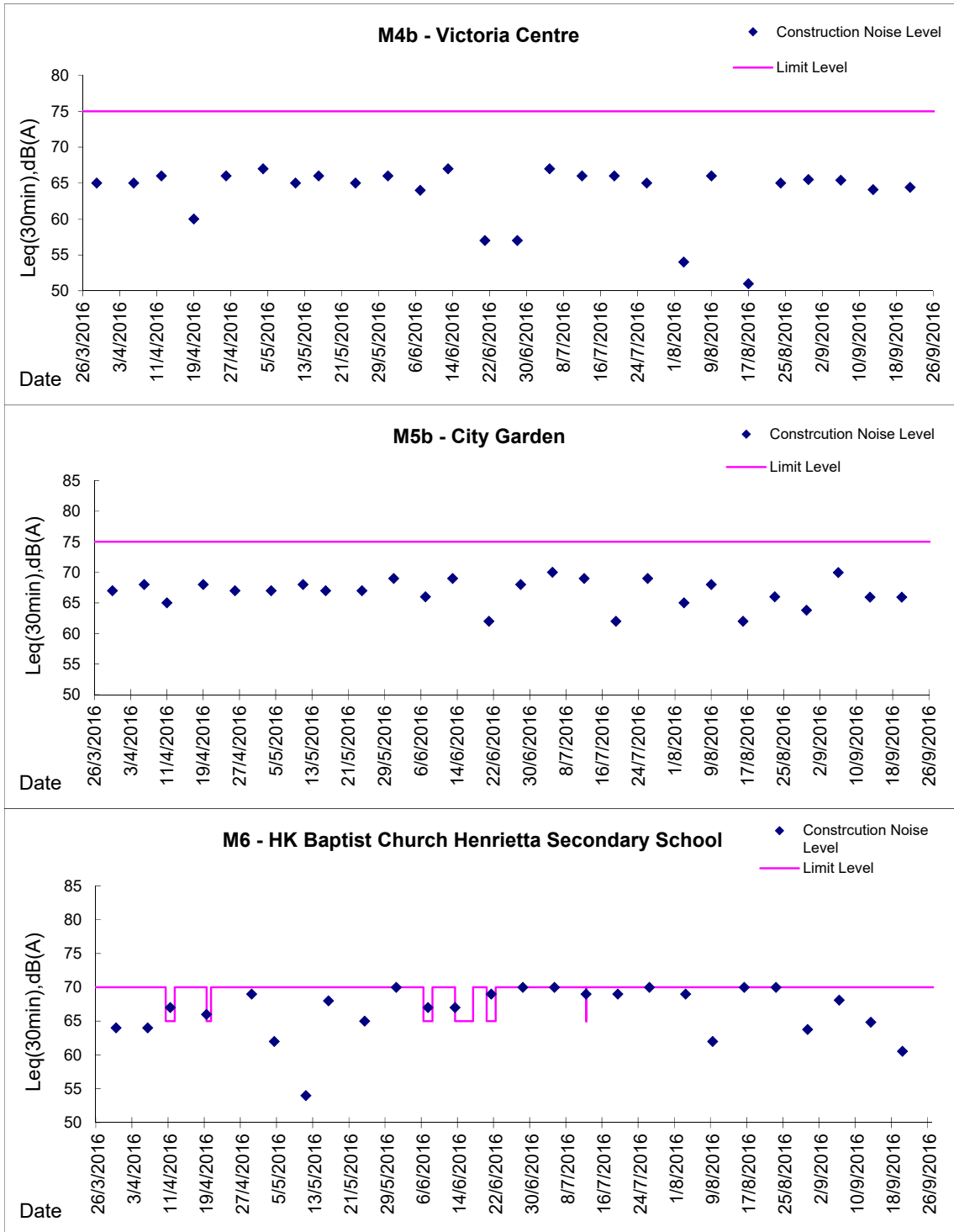
Day Time (0700 - 1900hrs on normal weekdays)





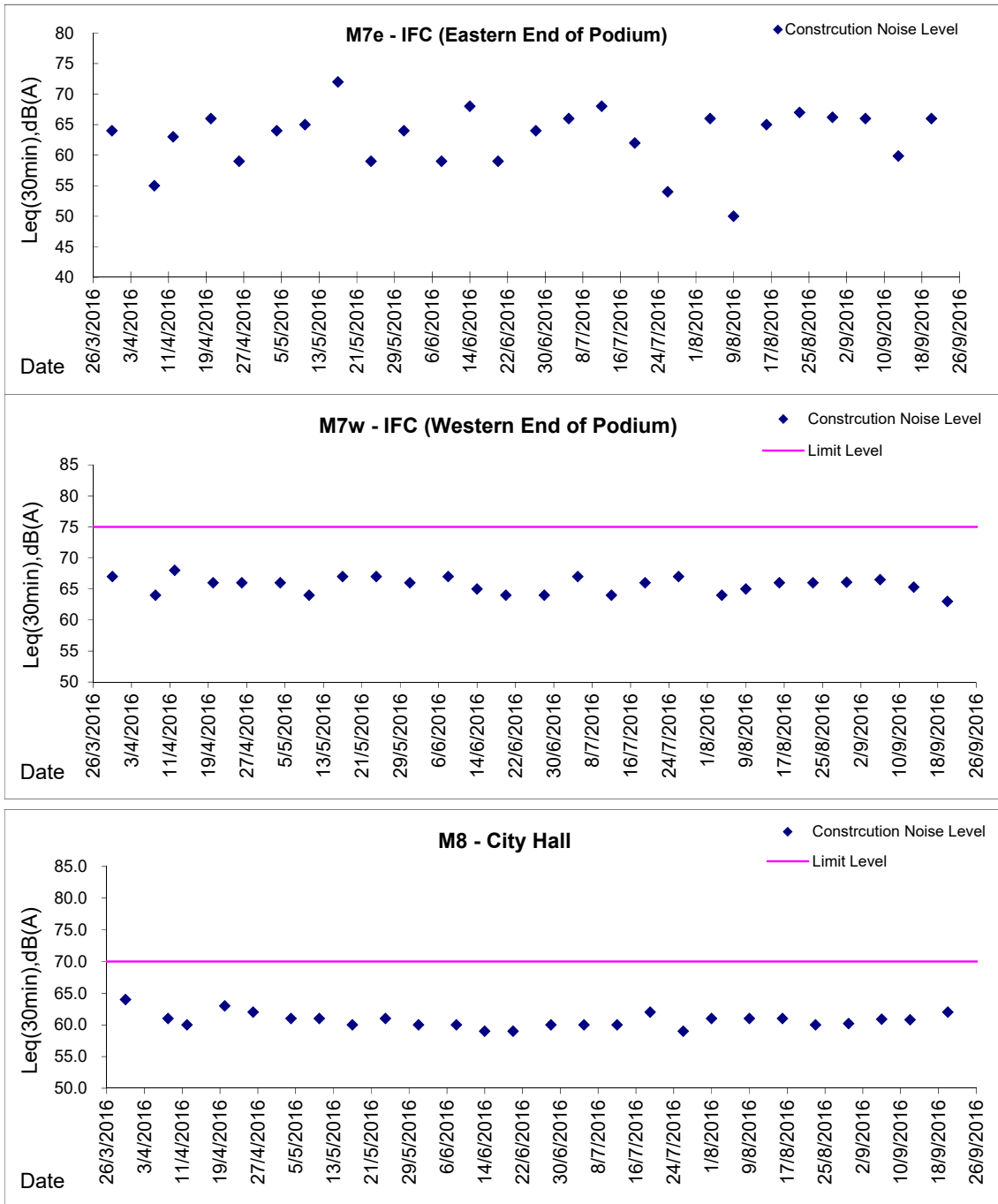
Graphic Presentation of Noise Monitoring Result

Day Time (0700 - 1900hrs on normal weekdays)



**Graphic Presentation of Noise Monitoring Result**

**Day Time (0700 - 1900hrs on normal weekdays)**



\* Remark: M7e - IFC (Eastern End of Podium) is a reference monitoring station